

ROSSI

FIREARMS

Owner's Manual

for the Rossi
Single Barrel Shotgun,
Single Barrel Rifle,
Rocket Pistol
and Matched Pair



READ CAREFULLY BEFORE USING YOUR FIREARM

Notice:

It is recommended that you record the model number, serial number and date of purchase of your Rossi firearm for future reference. Be sure to retain your store receipt and any other documentation that came with your Rossi.

Model Number _____

Serial Number _____

Date of Purchase _____

ALWAYS KEEP THE MUZZLE POINTED IN A SAFE DIRECTION.

ROSSI

F I R E A R M S

Owner's Manual

for the Rossi Single Barrel Shotgun,
Single Barrel Rifle,
Rocket Pistol
and Matched Pair



READ CAREFULLY BEFORE USING YOUR FIREARM

This Booklet

The safety warnings in this booklet are important. By understanding the dangers inherent in the use of any firearm, and by taking the precautions described herein, you can enjoy complete safety in the use of your Rossi firearm. Failure to heed any of these warnings may result in serious injury to you or others, as well as severe damage to the firearm or other property.

Dangerous Weapons

SHOTGUNS, RIFLES and PISTOLS are classified as FIREARMS or DANGEROUS WEAPONS and are sold by us with the specific understanding that we are not responsible in any manner whatsoever for their improper or negligent handling or resale under local laws and regulations.

BrazTech shall not be responsible in any manner whatsoever for malfunctioning of the firearm, or for physical injury or property damage, resulting in whole or in part from (1) criminal or negligent discharge, (2) improper or careless handling, (3) unauthorized modifications, (4) defective, improper hand-loaded, or reloaded ammunition, (5) neglect, or (6) other influences beyond our direct and immediate control. This limitation applies regardless of whether liability is asserted on the basis of contract, negligence or strict liability (including any failure to warn). Under no circumstance shall BrazTech be liable for incidental or consequential damages, such as loss of use of property, commercial loss and loss of earnings or profits.

Warning

Securing your firearm may inhibit access to it in a defense situation and result in injury or death.

Warning

Failure to properly secure a firearm may result in injury or death.

Safety Warnings

Not Just For Beginners

Regardless of your familiarity or experience with firearms, you need to study this manual.

The safe handling of firearms requires specialized training, discipline and caution. Firearms, by their nature and intended function, are deadly instruments. Accidental death or serious injury can result if they are handled improperly or carelessly.

Firearms rarely cause accidents. Firearms accidents almost always are caused by a failure to obey the basic rules of gun safety. Unfortunately, experienced shooters seem to violate these rules as frequently as beginners. Thus the basics of safe firearms handling cannot be repeated too often. Read, re-read and practice the basic principles of firearms safety until they become second nature: habits that you don't forget.

If you have any question about your knowledge or ability to use this or any other firearm with complete safety you should seek supervised instruction. Personalized instruction is often available from firearms dealers, gun clubs, state hunter safety programs or police departments in the United States. If none of these sources is accessible, write to the National Rifle Association, 11250 Waples Mill Road, Fairfax, VA 22030 or at www.nra.org. **THEY WILL ASSIST YOU.**

A person with a firearm in his possession has a full-time responsibility. He must **KNOW** how to keep and use his firearm safely, and then must always **TAKE** the precautions necessary -all of them. He cannot guess; he cannot forget. This responsibility is his alone. It cannot be passed off to someone else.

Remember: no firearm can be made accident-proof. A firearm is just a machine, with no judgement of its own. It responds to your actions, whether wise or foolish. The only truly effective safety device is the mind of a cautious shooter who never forgets that a moment's carelessness can produce permanent tragedy.

Firearms Are Not all Alike

Many makes and models of firearms might LOOK nearly the same. However, they differ widely in design and operation, and in the location and function of various controls.

Study this manual thoroughly. Educate yourself on the characteristics and operation of your particular firearm before attempting to handle it. Do not permit others to handle it - unless they also have done so.

You should have an instruction manual for every firearm you own. If you do not, write the manufacturer and obtain one. Most manufacturers will gladly send you one free. If for any reason a manual is not available, visit your public library. Many books have been published which contain detailed information on obsolete or discontinued firearms.

Your knowledge can prevent injuries.

Rossi firearms are designed and made to offer maximum safety when correctly used. However, as with any other weapon, it is not foolproof, and may become very dangerous if the following basic recommendations are not RIGIDLY observed:

Attention

1. **DANGER:** Never, never-ever point any firearm, loaded or unloaded, at anything you do not intend to shoot.
2. **WARNING:** Always treat every firearm as if it were loaded.
3. **NOTICE:** Get instruction from a competent firearms instructor before using any firearm.
4. **SAFETY FIRST:** The safety is only a mechanical device, not a substitute for common sense.
5. **WARNING:** Keep your finger off the trigger until you are actually aiming at the target ready to shoot.
6. **WARNING:** Be certain the firearm is unloaded before cleaning.
7. **WARNING:** Always empty firearms before entering a place where there are people.
8. **SAFETY FIRST:** Never leave a loaded firearm unattended.
9. **SAFETY FIRST:** Store firearms and ammunition separately beyond the reach of children.
10. **WARNING:** Don't test the safety by pulling the trigger while the safety is on unless you are absolutely sure the firearm is empty and you are pointing away from everyone.

11. **SAFETY FIRST:** Be sure of your target and backstop before you shoot.
12. **SAFETY FIRST:** Firearms and alcohol or drugs don't mix.
13. **WARNING:** Never pull a firearm towards you by the muzzle. Don't climb a tree or cross a fence with a loaded firearm.
14. **DANGER:** Load and unload with the muzzle pointed in a safe direction.
15. **SAFETY FIRST:** If a firearm fails to fire when the trigger is pulled, keep it pointed at the target for at least 30 seconds. Sometimes slow primer ignition will cause a "hang" fire and the cartridge will go off after a short pause.
16. **SAFETY FIRST:** Never shoot at hard flat surfaces or water, bullet may ricochet.
17. **DANGER:** When receiving a firearm always check that it is unloaded (open breech and inspect the chamber), even if you saw it done previously.
18. **DANGER:** Never put your hand over the muzzle of a firearm.
19. **DANGER:** Check ammunition to be sure it is the right size and caliber, and that it is not dented.
20. **SAFETY FIRST:** Use a proper holster and draw only if you intend to shoot.
21. **NOTICE:** Never cock the firearm until you are ready to shoot.
22. **SAFETY FIRST:** Dry firing is bad for this firearm, whether the hammer block is engaged or not.
23. **DANGER:** WHILE HANDLING ANY FIREARM, NEVER ALLOW IT TO POINT AT ANY PART OF YOUR BODY OR AT ANOTHER PERSON. NO HARM SHOULD RESULT IF YOU OBEY THIS RULE, EVEN IF AN ACCIDENTAL DISCHARGE OCCURS.
24. **CAUTION:** If there is any reason to suspect that a bullet is obstructing the barrel, immediately unload the firearm and look through the bore. It is not sufficient to merely look in the chamber.
25. **SAFETY FIRST:** Treat this firearm as a precision instrument.
26. **WARNING:** Old or reloaded ammunition may be dangerous. We recommend against using it.
27. **DANGER:** Don't try to change your firearm's trigger pull, because alteration of trigger pull usually affects sear engagement and may cause accidental discharge.
28. **SAFETY FIRST:** Write to us concerning any items or circumstances which might relate to your safety and the operation of our products.
29. **DANGER:** Never engage a gun lock on a loaded firearm.

Warning

Rossi firearms are manufactured to perform properly with the original parts as designed. It is your duty to make sure any parts you buy are installed correctly and that neither replacements nor originals are altered or changed. Your gun is a complex tool with many parts that must relate correctly to other parts. Putting a gun together wrong or with modified parts can result in a damaged gun, danger and injury or death to you and others through malfunction. Always have a qualified gunsmith work on your gun.

Protect Your Eyes and Ears

Always wear adequate shooting glasses and ear plugs or “ear muff” type protectors whenever you are shooting.

Always make certain that persons close to you are similarly protected.

Unprotected eyes may be injured by powder, gas, carbon residue, lubricant, metallic particles or similar debris which may emanate occasionally from any firearm in normal use.

Without ear protection, repeated exposure to shooting noise may lead to cumulative, permanent hearing loss.



Ammunition

1. Use only high quality, original, factory-manufactured ammunition. Do not use shot shells or cartridges that are dirty, wet, corroded, bent or damaged. Do not oil shot shells or cartridges. Do not spray aerosol type lubricants, preservatives, or cleaners directly onto shot shells or cartridges or where excess spray may flow into contact with shells or cartridges. Lubricant or other foreign matter on shot shells or cartridges can cause potentially dangerous ammunition malfunctions. Use only ammunition of the gauge for which your firearm is chambered. The proper gauge is permanently engraved on your firearm; never attempt to use ammunition of any other gauge. This shotgun is suitable for use of factory loaded shot shells or cartridges containing steel shot.
2. The use of reloaded, “remanufactured”, hand-loaded, or other non-standard ammunition voids all warranties. Improperly loaded ammunition voids all warranties. Improperly loaded ammunition can be extremely dangerous. Severe damage to the firearm and serious injury to the shooter or to others may result. Always use ammunition that complies with the industry performance standards established by the Sporting Arms and Ammunition Manufacturers Institute, Inc., of the United States, (SAAMI) or the equivalent from other countries.
3. Firearms may be severely damaged and serious injury to the shooter or to others may result from any condition causing excessive pressure inside the chamber or barrel during firing. Excessive pressure can be caused by obstructions in the barrel, propellant powder overloads, or by the use of incorrect shot shells or cartridges or defectively assembled shot shells or cartridges. In addition, the use of a dirty, corroded, or damaged shot shell or cartridge can lead to a burst shell or cartridge case and consequent damage to the firearm and personal injury from the sudden escape of high-pressure propellant gas within the firearm’s mechanism.
4. Immediately stop shooting and check the barrel for a possible obstruction whenever:
 - You have difficulty in, or feel unusual resistance in, chambering a shot shell or cartridge, or
 - A shot shell or cartridge misfires (does not go off), or
 - The mechanism fails to extract a fired shot shell or cartridge case, or
 - Unburned grains of propellant powder are discovered spilled in mechanism, or
 - A shot sounds weak or abnormal. In such cases it is possible that a bullet is lodged part way down the barrel. Firing a subsequent shot shell or cartridge into the obstructed barrel can wreck the firearm and cause serious injury to the shooter or to bystanders.

5. Shot, wads and bullets can become lodged in the barrel.
If the shot shell or cartridge has been improperly loaded without propellant powder, or if the powder fails to ignite (Ignition of the shot shell or cartridge primer alone will push the shot and wad or bullet out of the shot shell or cartridge case, but usually does not generate sufficient energy to expel them completely from the barrel).
6. If there is any reason to suspect that the barrel is obstructed, immediately unload the firearm and look down the bore. It is not sufficient to merely look in the chamber. Shot and/or the wad or the bullet may be lodged some distance down the barrel where it cannot easily be seen.

IF THE BORE IS OBSTRUCTED, DO NOT ATTEMPT TO SHOOT IT OUT BY USING ANOTHER SHOT SHELL OR CARTRIDGE OR BY BLOWING IT OUT WITH A BLANK. SUCH TECHNIQUES CAN GENERATE EXCESSIVE PRESSURE, WRECK THE FIREARM AND CAUSE SERIOUS PERSONAL INJURY.

If the obstruction can be removed with a cleaning rod, clear any unburned powder grains from the bore, chamber, and mechanism before resuming shooting. If the obstruction cannot be dislodged by tapping it out with a cleaning rod, take the firearm to a gunsmith.

7. Dirt, corrosion, or other foreign matter on a shot shell or cartridge can impede complete chambering and may cause the shot shell or cartridge to burst upon firing. The same is true of shot shells or cartridges which are damaged or deformed.
8. Do not oil shot shells or cartridges, and be sure to wipe the chamber clean of any oil or preservative before commencing to shoot. Oil interferes with the friction between shot shell or cartridge case and chamber wall that is necessary for safe functioning, and subjects the firearm to stress similar to that imposed by excessive pressure.
9. Use lubricants sparingly on the moving parts of your firearm. Avoid excessive spraying of any aerosol gun care product, especially where it may get on ammunition. All lubricants and aerosol spray lubricants in particular, can penetrate shot shell or cartridge primers and cause misfires. Some highly penetrative lubricants can also migrate inside shot shell or cartridge cases and cause deterioration of the propellant powder; on firing, the powder may not ignite. If only the primer ignites, there is danger that the shot shell or cartridge may become lodged in the barrel.

Rocket Ammo Specs

Caliber	Weight	Velocity
.357 Magnum	158 gr.	1220 fps
.44 Magnum	240 gr.	1600 fps
.45 Colt	225 gr.	950 fps

Warning

Discharging firearms in poorly ventilated areas, cleaning firearms, or handling ammunition may result in exposure to lead and other substances known to cause birth defects, reproductive harm, and other serious physical injury. Have adequate ventilation at all times. Wash hands thoroughly after exposure.

Operation of Your Firearm

Warning

These firearms have a “transfer bar” firing mechanism. This means that when the hammer is in the fully forward (rest) position, and the trigger is released, there is no mechanical contact between the face of the hammer and the rear of the firing pin.

When carrying the firearm, the safety lever should be “on” and the hammer resting on the safety intercept bar.

When the hammer is manually pulled back to its rearmost position (full-cocked), the transfer bar moves up and is positioned between the face of the hammer and the rearmost portion of the firing pin so that when the hammer is released from the fully-cocked position by pulling the trigger, the face of the hammer will strike the transfer bar which, in turn, strikes the firing pin which fires the shot shell or cartridge. When the trigger is released, the transfer bar drops down leaving a space between the face of the hammer and the rearmost face of the firing pin.

THESE FIREARMS ARE DESIGNED SO THAT THE BARREL AND CHAMBER CANNOT BE EITHER OPENED OR CLOSED WHEN THE FIREARM IS FULLY COCKED. ATTEMPTING TO FORCE THE CHAMBER OPEN OR CLOSED WILL DAMAGE YOUR FIREARM AND MAY RESULT IN ACCIDENTAL DEATH OR SERIOUS INJURY.

ALWAYS KEEP THE MUZZLE POINTED IN A SAFE DIRECTION.

Manual Safety

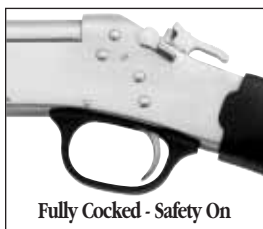
These firearms are manufactured with a manual safety - USE IT!



Make the Firearm Safe — The safety lever must be rotated counter-clockwise, Fully, so that the lever covers the red **F** and exposes the green **S**. THE SAFETY LEVER CAN BE ROTATED COUNTER-CLOCKWISE TO THE SAFE POSITION WHEN THE HAMMER IS IN THE REARMOST FULLY COCKED POSITION OR IS PULLED TO THE REAR ABOUT 1/2". NOTE: IN THIS POSITION, (HAMMER DOWN ON THE MANUAL SAFETY INTERCEPT), THE ACTION CAN BE OPENED AND CLOSED.



If you wish to safely decock the hammer from the fully cocked position, engage manual safety as described above and with the hammer under the full control of the user and **keeping the muzzle pointed in a safe direction**, holding and controlling the hammer with the thumb, pull the trigger and slowly and carefully let the hammer move forward until same is intercepted by the manual safety.



The manual safety can be disengaged with the hammer in the forward safe position or with the hammer in the fully cocked position by rotating the manual safety lever clockwise to the position where it covers the green **S** and exposes the red **F**.

De-Cocking

If the firearm is fully cocked and the user desires to place the hammer in the rest position, then the hammer must be under full control of the user.

KEEP THE MUZZLE POINTED IN A SAFE DIRECTION. PUT THE SAFETY LEVER ON. WHILE CAREFULLY HOLDING AND CONTROLLING THE HAMMER WITH THE THUMB, PULL THE TRIGGER, SLOWLY AND CAREFULLY LET THE HAMMER MOVE FORWARD APPROXIMATELY 1/2" AND RELEASE THE TRIGGER. CONTINUE TO LET THE HAMMER DOWN UNTIL IT IS RESTING ON THE MANUAL SAFETY INTERCEPT.

Warning

You should practice this method with an empty firearm until you are completely familiar and comfortable with this procedure.

How To Load Your Firearm

Warning

Before loading this or any firearm, always check the bore to be sure it is free of grease, oil or any other obstruction. **BE SURE** the chamber is empty and the entire barrel is clear. Open the breech and visually check the full length of the barrel for any obstruction. Failure to do so may damage your firearm and can result in accidental death or serious injury.

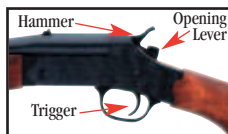
Warning

Do not rely on the color of a shotgun shell to determine gauge or bore. Always check the box and the headstamp of the actual shell **BEFORE** loading. Failure to do so may damage your firearm and can result in accidental death or serious injury

With the muzzle pointed in a safe direction, press down on the opening lever and pull the barrel



down. Insert the appropriate gauge shot shell or cartridge in the chamber and then lift up on the barrel which will cause it to close into the receiver.



To Fire

Warning

Always be sure the firearm is pointed at the target and away from other people, buildings and vehicles before firing. Do not fire into water.

With the gun pointed at the target, utilize your thumb to pull the hammer back to the full-cock position. Then pull the trigger to fire the firearm.

Unloading Your Firearm

To unload the firearm, press down on the top lever and pull down on the barrel. This will cause the fired or unfired shot shell or cartridge to be ejected from the chamber. Rimfire cartridges and shot shells will fully eject from the firearm, while centerfire cartridges will be partially extracted and need to be removed by hand.

Warning

Always make sure the chamber will open in a safe direction. Cartridges and shells ejecting from the chamber can cause injury.

ALWAYS INSPECT THE BARREL AND BORE VISUALLY TO MAKE SURE THAT THE CHAMBER IS EMPTY.

What to do If Firearm Fails To Fire

1. Misfires - If you squeeze the trigger and the shot shell or cartridge does not fire, remain in the shooting position and wait 30 seconds. Then, open the firearm as previously described. This will eject the misfired shot shell or cartridge from the gun.
2. Underpowered Shot Shell or Cartridge - An underpowered shot shell or cartridge is unusual if the ammunition is fresh, clean, and factory loaded. However, if you hear an unusual sound or low report, you should stop immediately, wait a full 30 seconds and check, visually, both the chamber and bore to make sure that there is no obstruction.

How to Clean Your Firearm

Warning

Before cleaning your firearm, be certain that it is completely unloaded and the bore and chamber are clear.

Clean the bore and barrel by using any standard shotgun, rifle or pistol cleaning rod, brass bore brush and cleaning patches. First run the brass brush through the barrel several times with powder solvent. Then run clean patches with the rod through the barrel until the patches come out clean. Then apply a light coating of oil on a clean patch and run it through the chamber and barrel. Then put a light coat of oil on all metal surfaces.

Warning

Further disassembly of the firearm is not recommended and should only be attempted by a qualified gunsmith.

Take Down Instructions

If you wish to “take down” your firearm for transport or storage, proceed as follows:

1. Make sure firearm is unloaded.
2. Unscrew, counter clockwise, the forward sling swivel until it is not engaged in the barrel, then pull forearm down and forward from barrel and receiver assembly. Press the opening lever down and pull barrel down and then back out of receiver.
3. Reassemble in reverse order.

Use a very thin coat of light oil during below freezing conditions. Condensation droplets will form soon after the firearm is brought into a warm room, or it may become wet during inclement weather. In any case, all moisture should be removed. Exterior metal finishes may be wiped down with a slightly oiled cloth. For long term storage, lightly oil the bore, barrel and action with gun oil. Your firearm should be completely unloaded and stored in a dry area. Never store your firearm in a carrying case.

Warning

Further disassembly of the firearm is not recommended and should only be attempted by a qualified gunsmith.

To Change Barrels

1. If you wish to change barrels, follow steps set out above in “Take Down Instructions.”
2. Your rifle and pistol barrels have adjustable sights that consist of a front sight that can be adjusted for elevations (up or down) of the point of impact of the bullet and an adjustable rear sight that can be moved to affect windage (point of impact) right and left.
 - The front sight is adjusted by using a 1mm allen wrench on the screw located in front of the sight.
 - The rear sight is adjusted by loosening the allen set screw using a 2mm allen wrench and then moving the sight in the dovetail.
 - To raise point of impact lower front sight.
 - To lower point of impact raise front sight.
 - To change point of impact to right, move rear sight in dovetail to right.
 - To change point of impact to the left, move rear sight to the left.

Rocket Single Shot Pistol/Stainless Steel or Blue Finish

Calibers	Barrel Length	Approx. Weight	Overall Length
.22LR	11"	3.17	15.75"
.22LR	14"	3.35	18.75"
.357 MAG/.38 SPL	11"	3.20	15.75"
.357 MAG/.38 SPL	14"	3.44	18.75"
.44MAG	11"	3.09	15.75"
.44MAG	14"	3.26	18.75"
.45 LONG COLT	11"	3.02	15.75"
.45 LONG COLT	14"	3.20	18.75"
.22 HORNET	11"	3.37	15.75"
.22 HORNET	14"	3.66	18.75"
.22-250	11"	3.37	15.75"
.22-250	14"	3.66	18.75"
.30-30	11"	3.26	15.75"
.30-30	14"	3.53	18.75"
.220 SWIFT	11"	3.37	15.75"
.220 SWIFT	14"	3.66	18.75"
.45 COLT/.410	11"	3.02	15.75"
.45 COLT/.410	14"	3.20	18.75"
.223 REM	11"	3.37	15.75"
.223 REM	14"	3.66	18.75"
.22 WMR	11"	3.37	15.75"
.22 WMR	14"	3.66	18.75"
7 X 30 WATERS	11"	3.31	15.75"
7 X 30 WATERS	14"	3.57	18.75"

Single Shot Shotguns/Blue Finish/Wood Stocks

Calibers/Gauge	Barrel Length	Approx. Weight	Overall Length
12 ga.	28"	5.25	43"
20 ga.	28"	5.25	43"
20 ga. (Y)	22"	5.00	35"
.410	28"	4.00	43"
.410 (Y)	22"	3.75	35"

Y=Youth Model

Single Shot Rifle/Stainless Steel or Blue Finish

Calibers	Barrel Length	Approx. Weight	Overall Length
.17 HMR	23"	6.25	38.5"
.17 HMR (Y)	18.5"	5.65	31.5"
.22 LR	23"	6.25	38.5"
.22 MAG	23"	5.47	38.5"
.223 REM	23"	6.25	38.5"
.223 REM (Y)	22"	6.25	37.5"
.243 WIN	23"	6.25	38.5"
.243 WIN (Y)	22"	6.25	37.5"
.270 WIN	23"	6.25	38.5"
.308 WIN	23"	6.25	38.5"
.308 WIN (Y)	22"	6.25	37.5"
.357 MAG/.38 SPL	23"	5.11	38.5"
.30-06	23"	5.27	38.5"
.44MAG	23"	4.80	38.5"
.45 COLT/.410	23"	4.72	38.5"

Matched Pair

Calibers/Gauge	Barrel Length	Approx. Weight	Overall Length
12ga/.22 LR	28"/23"	5.25/6.22	43"/38"
12ga/.17 HMR	28"/23"	5.25/6.22	43"/38"
20ga/.22 LR	22"/18.5"	5.00/5.62	35"/31.5"
.410/.22 LR	22"/18.5"	3.75/5.62	35"/31.5"
.410/.17 HMR (Y)	22"/18.5"	3.75/5.62	35"/31.5"
12ga/.22 MAG	28"/23"	5.25/6.22	43"/38"
12ga/.223 REM	28"/23"	5.25/6.22	43"/38"
20ga/.223 REM	28"/23"	5.00/6.22	43"/38"
20ga/.223 REM (Y)	22"/22"	5.00/5.62	35"/35"
12ga/.243 WIN	28"/23"	5.25/6.22	43"/38"
20ga/.243 WIN	28"/23"	5.00/6.22	43"/38"
20ga/.243 WIN (Y)	22"/22"	5.00/5.62	35"/35"
12ga/.270 WIN	28"/23"	5.25/6.22	43"/38"
20ga/.270 WIN	28"/23"	5.00/6.22	43"/38"
12ga/.30-06	28"/23"	5.25/6.22	43"/38"
20ga/.30-06	28"/23"	5.00/6.22	43"/38"
12ga/.308 WIN	28"/23"	5.25/6.22	43"/38"
20ga/.308 WIN	28"/23"	5.00/6.22	43"/38"
20ga/.308 WIN (Y)	22"/22"	5.00/5.62	35"/35"
12ga/20ga	28"/28"	5.25/5.00	43"/43"

Y=Youth Model

Repair Instructions

Your firearm has been designed, engineered and manufactured in accordance with Rossi's rigid quality control standards. However, any mechanical device may occasionally require adjustment or repair.

Parts

All firearms require periodic maintenance and inspection which may reveal a need for adjustment or repair. Have your firearm checked by a competent gunsmith annually, even if it seems to be working well, since breakage, improper functioning, undue wear, or corrosion of some components may not be apparent from external examination. If you notice ANY mechanical malfunction, do NOT continue to use the firearm. UNLOAD the firearm and take it to a competent gunsmith immediately.

Our Service Department maintains a full complement of replacement parts for our firearms of current manufacture. Even though most gunsmiths have the knowledge, training and ability to make the necessary repairs to your firearm, the skill and workmanship of any particular gunsmith is totally beyond our control. Should your firearm ever require service, we strongly recommend that you return it to BrazTech. Follow the instructions outlined on the warranty card included with your firearm. Remember, unauthorized adjustments or parts replacement can void your warranty. It is the responsibility of the purchaser to be absolutely certain that any parts ordered from BrazTech are of the correct type and are properly fitted and installed by a competent person. THIS FIREARM IS A PRECISION MECHANISM AND THE IMPROPER FITTING OF PARTS OR IMPROPER MECHANICAL ADJUSTMENT MAY RESULT IN A DANGEROUS MALFUNCTION, DAMAGE TO THE FIREARM, AND POSSIBLE SERIOUS INJURY TO THE SHOOTER OR TO OTHERS. Therefore, the purchaser and/or installer of parts must accept full responsibility for the correct adjustment of and function of the firearm after such installation has been made or attempted.

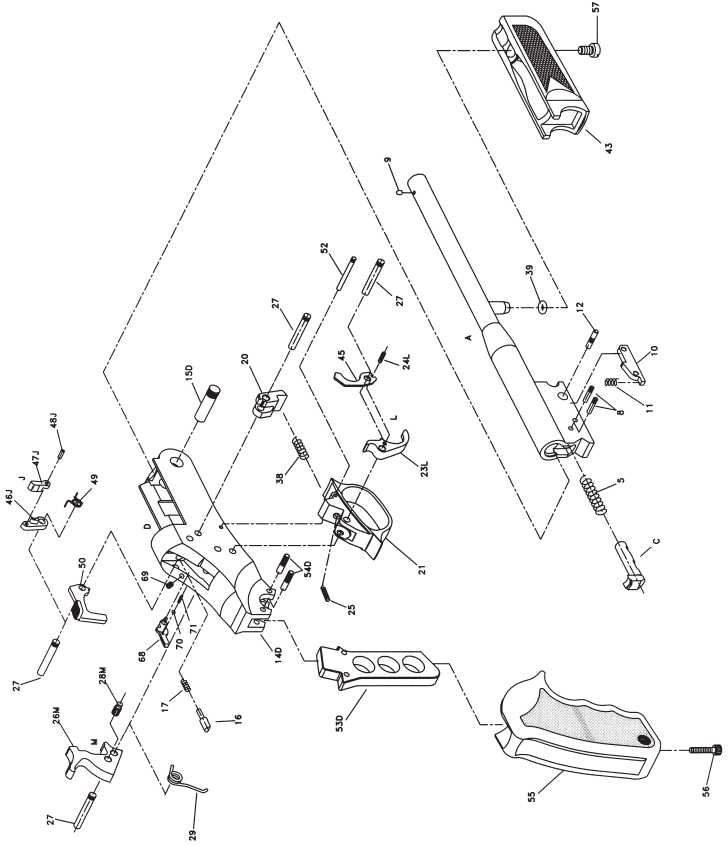
Single Barrel Shotgun

Barrel Assembly	A	Stock Assembly	F
Extractor.....	6	Stock	33-F
Extractor Stop Pin	8	Butt Plate	34-F
Front Sight.....	9	Butt Plate Screw	35-F
Extractor Lever.....	10	Lower Swivel	G
Extractor Lever Spring	11	36-G
Extractor Lever Pin.....	12	37-G-E
Receiver Assembly	D	Locking Plate Spring	38
Receiver	14-D	O-Ring.....	39
Barrel Pin	15-D	Butt Stock / Receiver	
Firing Pin	16	Screw	40
Firing Pin Spring.....	17	Receiver Locking Nut.....	41
Locking Plate	20	Forearm Assembly	H
Trigger Guard	21	Forend Locking Screw ..	42-H
Trigger Assembly.....	L	Wood.....	43-H
Trigger	23-L	Forend.....	44-H
Trigger Lever Pin	24-L	Trigger Lever	45
Trigger Spring.....	25	Transfer Bar Assembly	J
Hammer Assembly	M	Transfer Bar Lever	46-J
Hammer.....	26-M	Transfer Bar	47-J
Receiver Assembly Pin.....	27	Transfer Bar Pin.....	48-J
Hammer Spring Pin	28-M	Transfer Bar Lever Spring ..	49
Hammer Spring	29	Opening Lever.....	50
Stock Assembly Bushing	30	Manual Safety Lever.....	68
Forearm Assembly		Manual Safety Screw.....	69
Screw Nut	31	Locking Ball.....	70
Forearm Assembly Screw.....	E	Locking Spring	71

Single Barrel Rifle

Barrel Assembly	A	Butt Stock / Receiver	
Extractor	6	Screw	40
Extractor Rod	7	Receiver Locking Nut.....	41
Receiver Assembly	D	Forearm Assembly	H
Receiver	14-D	Forend Locking Screw ...	42-H
Barrel Pin	15-D	Wood.....	43-H
Firing Pin	16	Forend.....	44-H
Firing Pin Spring.....	17	Trigger Lever	45
Locking Plate	20	Transfer Bar Assembly	J
Trigger Guard	21	Transfer Bar Lever	46-J
Trigger Assembly.....	L	Transfer Bar	47-J
Trigger	23-L	Transfer Bar Pin	48-J
Trigger Lever Pin	24-L	Transfer Bar Lever	
Trigger Spring.....	25	Spring.....	49
Hammer Assembly	M	Opening Lever.....	50
Hammer.....	26-M	Trigger Guard Pin	52
Receiver Assembly Pin.....	27	Rear Sight Screw	62
Hammer Spring Pin	28-M	Rear Sight	63
Hammer Spring	29	Front Sight Base Screw.....	64
Stock Assembly Bushing ...	30	Front Sight	65
Forearm Assembly		Front Sight Screw	66
Screw Nut	31	Front Sight Base.....	67
Forearm Assembly Screw.....	E	Manual Safety Lever.....	68
Stock Assembly	F	Manual Safety Screw.....	69
Stock	33-F	Locking Ball.....	70
Recoil Pad	34-F	Locking Spring	71
Recoil Pad Screw	35-F	Cap Screw	72
White Spacer	75-F	Extractor Stop Pin Slide ...	73
Lower Swivel	G	Extractor Spring	74
Locking Plate Spring	38	Nylon Washer	77
O-Ring.....	39		

Rocket Pistol



ALWAYS KEEP THE MUZZLE POINTED IN A SAFE DIRECTION.

Rocket Pistol

Barrel Assembly	A	Forend Locking Screw ...	42-H
Extractor Spring	5	Forearm Assembly	H
Extractor	6	Wood	43-H
Extractor Stop Pin	8	Forend	44-H
Front Sight	9	Trigger Lever	45
Extractor Lever	10	Transfer Bar Lever	46-J
Extractor Lever Spring	11	Transfer Bar	47-J
Extractor Lever Pin	12	Transfer Bar Pin	48-J
Receiver Assembly	D	Transfer Bar Lever Spring ..	49
Receiver	14-D	Opening Lever	50
Receiver Pin	15-D	Trigger Guard Pin	52
Firing Pin	16	Handle	53-D
Firing Pin Spring	17	Handle Pin	54-D
Locking Plate	20	Rubber Grip	55
Trigger Guard	21	Grip Swivel Screw	56-G
Trigger	23-L	Forearm Screw	57
Trigger Lever Pin	24-L	Swivel	58-E
Trigger Spring	25	Forearm Tube	59
Hammer	26-M	Forearm Tube Cap	60
Receiver Assembly Pin	27	Forearm Tube Screw	61
Hammer Spring Pin	28-M	Manual Safety	68
Hammer Spring	29	Manual Safety Screw	69
Locking Plate Spring	38	Locking Ball	70
O-Ring	39	Locking Spring	71

Matched Pair

Barrel Assembly	A	Lower Swivel	G
Extractor Spring	5	Locking Plate Spring	38
Extractor	6	O-Ring	39
Extractor Rod	7	Butt Stock / Receiver	
Extractor Stop Pin	8	Screw	40
Front Sight	9	Receiver Locking Nut	41
Extractor Lever	10	Forearm Assembly	H
Extractor Lever Spring	11	Forend Locking Screw ...	42-H
Extractor Lever Pin	12	Wood	43-H
Receiver Assembly	D	Forend	44-H
Receiver	14-D	Trigger Lever	45
Barrel Pin	15-D	Transfer Bar Assembly	J
Firing Pin	16	Transfer Bar Lever	46-J
Firing Pin Spring	17	Transfer Bar	47-J
Locking Plate	20	Transfer Bar Pin	48-J
Trigger Guard	21	Transfer Bar Lever	
Trigger Assembly	L	Spring	49
Trigger	23-L	Opening Lever	50
Trigger Lever Pin	24-L	Trigger Guard Pin	52
Trigger Spring	25	Rear Sight Screw	62
Hammer Assembly	M	Rear Sight	63
Hammer	26-M	Front Sight Base Screw	64
Receiver Assembly Pin	27	Front Sight	65
Hammer Spring Pin	28-M	Front Sight Screw	66
Hammer Spring	29	Front Sight Base	67
Stock Assembly Bushing	30	Manual Safety	68
Forearm Assembly		Manual Safety Screw	69
Screw Nut	31	Locking Ball	70
Forearm Assembly Screw	E	Locking Spring	71
Stock Assembly	F	Cap Screw	72
Stock	33-F	Extractor Stop Pin Slide ...	73
Recoil Pad	34-F	Extractor Spring	74
Recoil Pad Screw	35-F	Nylon Washer	77
White Spacer	75-F		



A WORD TO THE WISE

MOST GUN ACCIDENTS HAPPEN BECAUSE THE SHOOTER CARELESSLY VIOLATES THE SINGLE MOST IMPORTANT RULE OF SAFE GUN HANDLING:

ALWAYS KEEP THE MUZZLE POINTED IN A SAFE DIRECTION!

IMPORTANT:

DO NOT DISCARD

KEEP THIS MANUAL WITH YOUR FIREARM. UPON CHANGE OF OWNERSHIP TRANSFER THIS MANUAL WITH THE FIREARM.

© Copyright 2002 Braztech International, L.C.

Rossi is a registered mark of Amadeo Rossi, S.A.

The information in this manual is provided as guidelines and directions for the safe use of your firearm. Braztech and/or Rossi can not be held responsible for the misuse, illegal or negligent use of our products. We strongly encourage all firearms owners to observe all firearms safety rules.

Keep this and all firearms and ammunition away from unsupervised children.

Firearms safety is everyone's responsibility.

READ CAREFULLY BEFORE USING YOUR FIREARM